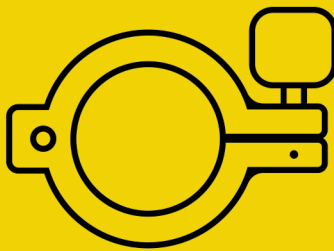




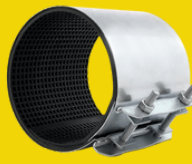
WWW.BYLDR.IN



Byldr[®]

STRENGTH IN EVERY CONNECTION

**WELCOME TO THE WORLD OF
PIPE FIXING AND PIPE
SUPPORT SYSTEMS**





COMPANY PROFILE

BYLDR stands as a formidable force in the industrial sector, specialising in the production of metal goods used in Pipe Support Systems, HVAC Anti Vibration System, Plumbing, Fire Protection, Constructions Industries and Equipments for Industrial, Commercial, Utility and OEM Installation.

BYLDR delivers *"Strength in every connection"*. Be it the **Durable Products** that we offer, or the **connections** we form with each person/business/partner coming along our way.

In every joint, every weld, and every assembly, **BYLDR** infuses unparalleled strength. With a commitment to precision engineering and unwavering durability, our tagline, *"Strength in every connection"* encapsulates our dedication to delivering robust and reliable solutions for a multitude of industries.

BYDLR aim to **Raise Industry Standards** with each activity they do. Our products are defined by three words- **Quality, Durability and Design**.

If a unique application requires a special or customised products which are not included in this catalogue, **BYLDR** can deliver customised products as per your requirements.

PARENT COMPANY

PP Impex India, is our parent company which is a manufacturer and exporter of stainless steel & Steel sheet metal products.

We have been exporting Private Label and OEM parts since last **20 years**. P P Impex India offers re-engineering, prototyping, tooling making, Pilot and Full-scale manufacturing services for customised deep drawn components and other Sheet Metal Parts.

NOTE

BYLDR reserves the right to change the specification, materials and process or the availability of products at any time without prior notice. While every effort had been made to assure the accuracy of information contained in this catalogue at the time of publication, **BYDLR** is not responsible for inaccuracies resulting from undetected errors or omissions.

WHERE ARE WE?



We serve in:

- INDIA
- AMERICAS
- MIDDLE EAST
- EUROPE
- SOUTH-EAST ASIA
- AUSTRALIA
- SOUTH AFRICA

Our Facility

Our manufacturing facilities are located in the financial capital of **India - Mumbai** so we have advantage of low cost labour. We can leverage this advantage to our customers so that they can compete in their markets. Also we are 2hrs away from India's Largest Container Port (JNPT), which enables us to serve our international customers better.

We have our factory and manufacturing facilities in the outskirts of Mumbai, India. It is a place called Nalasopara.

With many SKU's being built in Metro Cities of India.

UNIVERSAL TESTING MACHINE

Commonly known as **UTM**, this machine is used for several tests like, determining the Ultimate Tensile Strength of the material, the Young's Modulus of the material, The Load Test for a part or assembly etc.

The part or specimen to be tested is clamped securely between the metal grips. The machines then pull the two grips apart while exerting a pulling force. This force is measured by digital load cells and measurements are noted. The elongation in gauge length is measured on a scale. Based on the requirement of the test this change in length may also be noted.

The force is generally exerted to an extent when the specimen ultimately fails (breaks). The point of failure and the geometry of failure can also provide vital details.



Capacity : 50KN

Standard followed: ASTM E-8

SALT SPRAY MACHINE

This **Salt Spray Test Machine** confirms to ASTM B117 specs. The salt spray chamber test is generally used to assess the ability of coating or treatment to resist corrosion. A 5% NaCl solution mist is fogged into a chamber which is maintained at 35 °C over a set period of time. The test piece is kept inside the chamber and is observed periodically to see the visible signs of corrosion. On a Zinc coated part the values which we look for are number of hours for appearance of White Rust and number of hours for appearance for Red Rust.



Standard followed: ASTM B 117

HYDRO-TEST EQUIPMENT



We have **Hydro-Test Equipment** to test any specimen from diameter 20mm upto 600mm and from pressure ranging upto **70 Kg/cm²**.

The hydro-test is a versatile test used to various products with several end-goals. It maybe used to test the failure of a part when subjected to a certain water pressure.

RUBBER HARDNESS TESTER



Rubber Hardness Tester is used to check the hardness of rubber on Shore A scale. A Dial is pressed perpendicular to the specimen to be tested and the reading of the dial indicates the hardness of rubber.

This can serve as a quick method to check the quality of rubber.

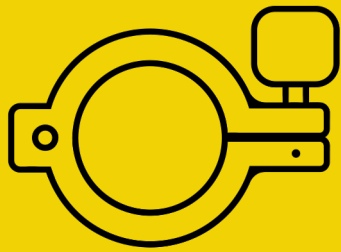
DIFFERENTIAL PRESSURE / LEAKAGE TESTER



The gas appliances that we export operate at pressures as low as 30 Milibar pressure. Even at these low pressures it is important to check the valves which may have leakages. Our valves are procured from CE certified sources however before they go into the appliance they are tested again for leakages.

The Differential pressure leakage tester is a simple proprietary equipment made in-house to perform this job.

WWW.BYLDR.IN



Byldr[®]

STRENGTH IN EVERY CONNECTION



DURAFIX - A

BYLDR PIPE CLAMPS

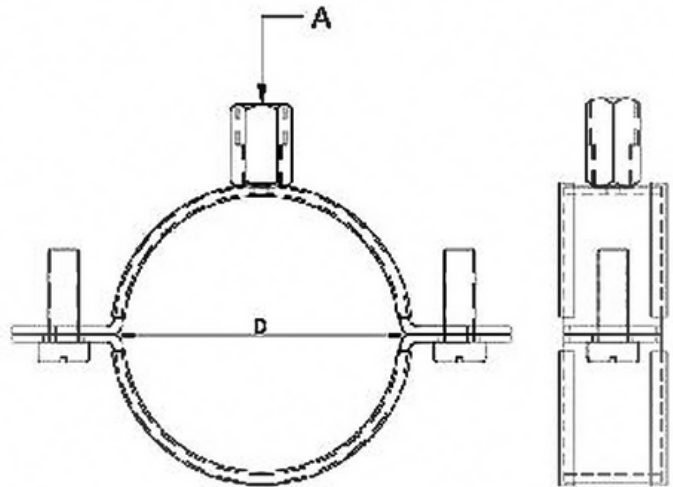




EPDM LINED PIPE CLAMP (HEAVY DUTY)

DURAFIX-A01

M8/M10



APPLICATION

Rubber Lined Pipe clamp is recommended for mounting pipes against the walls (vertically or horizontally), ceilings and floors. It is used for mounting non-insulated (bare) pipes. Installation can be done before or after the pipes are placed in position.

CONSTRUCTION

Rubber Lined Pipe Clamp consists of piece of mild steel shaped to wrap around the pipe. The pipe is secured with Screws / Bolts on the sides. This model has dual nut M8xM10 nut for mounting

MATERIAL

Mild Steel. Also other materials can be provided on request

FINISH AVAILABLE

Plain, Electro-Galvanized, Hot-Dip Galvalnized, Zinc Flake, Epoxy

MAX TEMPERATURE

110° C

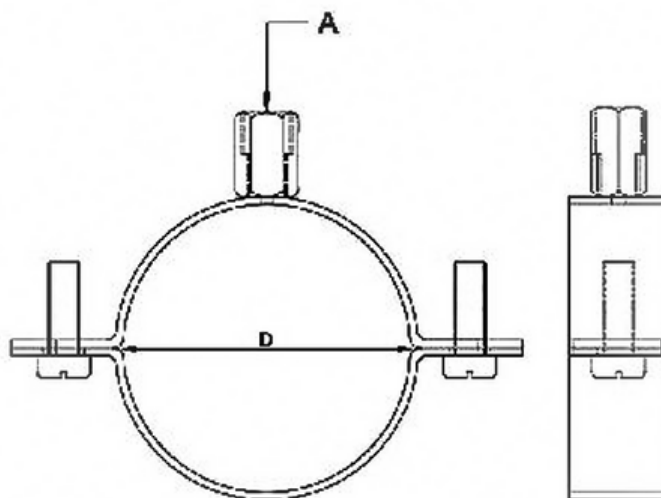
PRODUCT CODE	NOMINAL PIPE SIZE (IN)	PIPE SIZE (MM)	PIPE OD (MM)	RANGE (MM)	NUT SIZE (A)	SIDE SCREW SIZE	MAX LOAD (KG)	WIDTH (MM)
DURAFIX-A-01001	1/8"			11-14	M8 X M10	M6	450	19-20
DURAFIX-A-01002	1/4"			14-19	M8 X M10	M6	450	19-20
DURAFIX-A-01003	3/8"	DN10	17.1	18-21	M8 X M10	M6	450	19-20
DURAFIX-A-01004	1/2"	DN15	21.3	20-25	M8 X M10	M6	450	19-20
DURAFIX-A-01005	3/4"	DN20	26.7	26-30	M8 X M10	M6	450	19-20
DURAFIX-A-01006	1"	DN25	33.4	32-36	M8 X M10	M6	450	19-20
DURAFIX-A-01007	1 1/4"	DN32	42.1	38-43	M8 X M10	M6	450	19-20
DURAFIX-A-01008	1 1/2"	DN40	48.2	47-51	M8 X M10	M6	450	19-20
DURAFIX-A-01009			54	53-58	M8 X M10	M6	450	19-20
DURAFIX-A-01010	2"	DN50	60.3	60-64	M8 X M10	M6	450	19-20
DURAFIX-A-01011			70	68-73	M8 X M10	M6	450	19-20
DURAFIX-A-01012	2 1/2"	DN65	73	74-80	M8 X M10	M6	600	19-20
DURAFIX-A-01013			83	81-86	M8 X M10	M6	600	19-20
DURAFIX-A-01014	3"	DN80	88.9	87-92	M8 X M10	M6	600	19-20
DURAFIX-A-01015				93-99	M8 X M10	M6	600	19-20
DURAFIX-A-01016	3 1/2"	DN90	101.6	99-105	M8 X M10	M6	600	19-20
DURAFIX-A-01017			110	107-112	M8 X M10	M6	600	19-20
DURAFIX-A-01018	4"	DN100	114.3	113-118	M8 X M10	M6	600	19-20
DURAFIX-A-01019			125	125-130	M8 X M10	M6	600	19-20
DURAFIX-A-01020	5"	DN125	141.3	133-141	M8 X M10	M6	600	19-20
DURAFIX-A-01021			150	142-150	M8 X M10	M6	600	19-20
DURAFIX-A-01022			160	151-160	M8 X M10	M6	600	19-20
DURAFIX-A-01023	6"	DN150	168.3	159-166	M8 X M10	M6	600	19-20
DURAFIX-A-01024			200	200-210	M8 X M10	M6	600	19-20
DURAFIX-A-01025	8"	DN200	219.1	212-219	M8 X M10	M6	950	19-20
DURAFIX-A-01026	10"	DN250	273	269-274	M8 X M10	M6	950	19-20

PIPE CLAMP WITHOUT LINING (HEAVY DUTY)

DURAFIX-A02



M8/M10



APPLICATION

Pipe Clamp is recommended for mounting pipes against the walls (vertically or horizontally), ceilings and floors. It is used for mounting non-insulated (bare) pipes. Installation can be done before or after the pipes are placed in position.

CONSTRUCTION

Pipe Clamp consists of piece of mild steel shaped to wrap around the pipe. The pipe is secured using the screws on the sides. This model has Dual M8/M10 nut for mounting

MATERIAL

Mild Steel. Also other materials can be provided on request

FINISH AVAILABLE

Plain, Electro-Galvanized, Hot-Dip Galvalnized, Zinc Flake, Epoxy

MAX TEMPERATURE

110 C

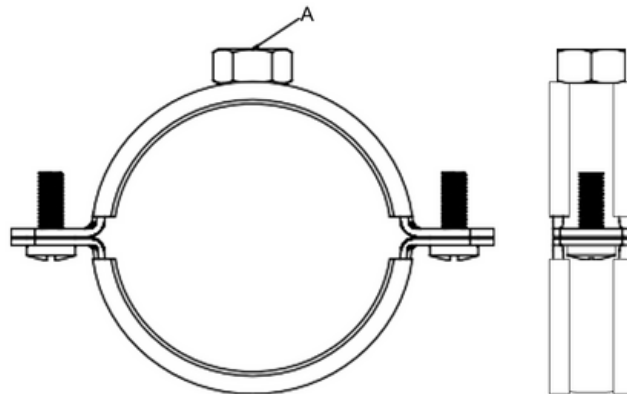
PRODUCT CODE	NOMINAL PIPE SIZE (IN)	PIPE OD (MM)	RANGE (MM)	NUT SIZE (A)	SIDE SCREW SIZE	MAX LOAD (KG)	WIDTH (MM)
DURAFIX-A-02001	1/4"		14-19	M8 X M10	M6	450	19-20
DURAFIX-A-02002	3/8"	DN10	17.1	M8 X M10	M6	450	19-20
DURAFIX-A-02003	1/2"	DN15	21.3	M8 X M10	M6	450	19-20
DURAFIX-A-02004	3/4"	DN20	26.7	M8 X M10	M6	450	19-20
DURAFIX-A-02005	1"	DN25	33.4	M8 X M10	M6	450	19-20
DURAFIX-A-02006	1 1/4"	DN32	42.1	M8 X M10	M6	450	19-20
DURAFIX-A-02007	1 1/2"	DN40	48.2	M8 X M10	M6	450	19-20
DURAFIX-A-02008			54	M8 X M10	M6	450	19-20
DURAFIX-A-02009	2"	DN50	60.3	M8 X M10	M6	450	19-20
DURAFIX-A-02010			70	M8 X M10	M6	450	19-20
DURAFIX-A-02011	2 1/2"	DN65	73	M8 X M10	M6	600	19-20
DURAFIX-A-02012			83	M8 X M10	M6	600	19-20
DURAFIX-A-02013	3"	DN80	88.9	M8 X M10	M6	600	19-20
DURAFIX-A-02014			93-99	M8 X M10	M6	600	19-20
DURAFIX-A-02015	3 1/2"	DN90	101.6	M8 X M10	M6	600	19-20
DURAFIX-A-02016			110	M8 X M10	M6	600	19-20
DURAFIX-A-02017	4"	DN100	114.3	M8 X M10	M6	600	19-20
DURAFIX-A-02018			125	M8 X M10	M6	600	19-20
DURAFIX-A-02019	5"	DN125	141.3	M8 X M10	M6	600	19-20
DURAFIX-A-02020			150	M8 X M10	M6	600	19-20
DURAFIX-A-02021			160	M8 X M10	M6	600	19-20
DURAFIX-A-02022	6"	DN150	168.3	M8 X M10	M6	600	19-20
DURAFIX-A-02023			200	M8 X M10	M6	600	19-20
DURAFIX-A-02024	8"	DN200	219.1	M8 X M10	M6	950	19-20
DURAFIX-A-02025	10"	DN250	273	M8 X M10	M6	950	19-20



EPDM LINED PIPE HANGER

M8 ONLY

DURAFIX-A03



APPLICATION

EPDM Lined Pipe Clamp is recommended for mounting pipes against the walls (vertically or horizontally), ceilings and floors. It is used for mounting non-insulated (bare) pipes. Installation can be done before or after the pipes are placed in position.

CONSTRUCTION

EPDM Lined Pipe Clamp consists of piece of mild steel shaped to wrap around the pipe. Reduces noise upto 18 dB. This model has Single M8 nut for mounting.

MATERIAL

Mild Steel. Also other materials can be provided on request

FINISH AVAILABLE

Plain, Electro-Galvanized, Zinc Flake

MAX TEMPERATURE

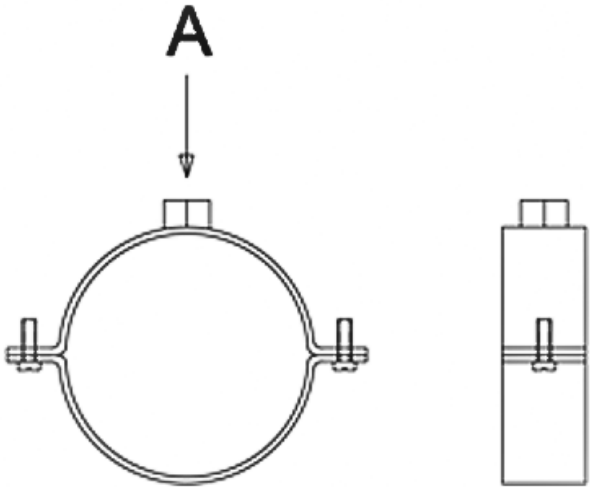
110°C

PRODUCT CODE	NOMINAL PIPE SIZE (IN)	PIPE SIZE (MM)	PIPE OD (MM)	RANGE (MM)	HANGER ROD SIZE (MM) (A)	SIDE SCREW SIZE	MAX LOAD (KG)	WIDTH (MM)
DURAFIX-A-03001	1/2"	DN15	21.3	20-25	M8	M6	460	19-20
DURAFIX-A-03002	3/4"	DN20	26.7	26-30	M8	M6	460	19-20
DURAFIX-A-03003	1"	DN25	33.4	32-36	M8	M6	460	19-20
DURAFIX-A-03004	1 1/4"	DN32	42.1	38-43	M8	M6	460	19-20
DURAFIX-A-03005	1 1/2"	DN40	48.2	47-51	M8	M6	460	19-20
DURAFIX-A-03006	2"	DN50	60.3	60-64	M8	M6	460	19-20
DURAFIX-A-03007	2 1/2"	DN65	73	74-80	M8	M6	570	19-20
DURAFIX-A-03008	3"	DN80	88.9	87-92	M8	M6	570	19-20

PIPE HANGER WITHOUT LINING

M8 ONLY

DURAFIX-A04



APPLICATION

Pipe Clamp is recommended for mounting pipes against the walls (vertically or horizontally), ceilings and floors. It is used for mounting non-insulated (bare) pipes. Installation can be done before or after the pipes are placed in position.

CONSTRUCTION

Pipe Clamp consists of piece of mild steel shaped to wrap around the pipe. The pipe is secured with Screws / Bolt s on the sides. This model has Single M8 nut for mounting

MATERIAL

Mild Steel. Also other materials can be provided on request

FINISH AVAILABLE

Plain, Electro-Galvanized, Zinc Flake

MAX TEMPERATURE

110° C

PRODUCT CODE	NOMINAL PIPE SIZE	PIPE OD	RANGE	HANGER ROD	SIDE SCREW	MAX LOAD	WIDTH	
	(IN)	(MM)	(MM)	SIZE (MM) (A)	SIZE	(KG)	(MM)	
DURAFIX-A-04001	1/2"	DN15	21.3	20-25	M8	M6	460	19-20
DURAFIX-A-04002	3/4"	DN20	26.7	26-30	M8	M6	460	19-20
DURAFIX-A-04003	1"	DN25	33.4	32-36	M8	M6	460	19-20
DURAFIX-A-04004	1 1/4"	DN32	42.1	38-43	M8	M6	460	19-20
DURAFIX-A-04005	1 1/2"	DN40	48.2	47-51	M8	M6	460	19-20
DURAFIX-A-04006	2"	DN50	60.3	60-64	M8	M6	460	19-20
DURAFIX-A-04007	2 1/2"	DN65	73	74-80	M8	M6	570	19-20
DURAFIX-A-04008	3"	DN80	88.9	87-92	M8	M6	570	19-20

SINGLE SCREW RUBBER PIPE CLAMP

DURAFIX-A05



APPLICATION

These easy to install Clamps are designed to do quick installation of small pipes or electrical cables. It has single screw to fasten hence saves time of installation for lighter uses.

CONSTRUCTION

The Single Screw Clamp has a steel body and a EPDM rubber lining. The unique locking design on one end makes the fastening easier with only one screw to tighten while installing.

MATERIAL

Mild Steel. Also available in stainless steel on special order.

FINISH AVAILABLE

Plain, Electro-Galvanized, Zinc Flake

MAX TEMPERATURE

110°C

PRODUCT CODE	NOMINAL PIPE SIZE (IN)	PIPE OD (MM)	RANGE (MM)	NUT SIZE (A)	MAX LOAD (KG)	WIDTH (MM)
DURAFIX-A-05001	1/4"	13	12-15	M8	100	20
DURAFIX-A-05002	3/8"	DN10	17.1	M8	100	20
DURAFIX-A-05003	1/2"	DN15	21.3	M8	100	20
DURAFIX-A-05004	3/4"	DN20	26.7	M8	150	20
DURAFIX-A-05005	1"	DN25	33.4	M8	150	20
DURAFIX-A-05006	1 1/4"	DN32	42.1	M8	150	20
DURAFIX-A-05007	1 1/2"	DN40	48.2	M8	200	20
DURAFIX-A-05008		54	53-58	M8	200	20
DURAFIX-A-05009	2"	DN50	60.3	M8	200	20

*M8/M10 combination nut can be provided

P CLIPS

DURAFIX-A06



CUSHIONED CLAMP



PRODUCT CODE	PIPE DIA (MM)	WIDTH (MM)	HOLE SIZE (MM)
DURAFIX-A-06001	6.4	15	4
DURAFIX-A-06002	9.5	15	4
DURAFIX-A-06003	12.7	15	6
DURAFIX-A-06004	15.9	15	6
DURAFIX-A-06005	19.1	15	6
DURAFIX-A-06006	22.2	15	6
DURAFIX-A-06007	25.4	15	6

MATERIAL

Mild Steel. Also available in stainless steel on special order.

FINISH AVAILABLE

Plain, Electro-Galvanized, Hot-Dip Galvanised, Epoxy Coating

P CLIPS VINYL COATED

PRODUCT CODE	PIPE DIA (MM)	WIDTH (MM)	HOLE SIZE (MM)
DURAFIX-A-06101	4.7	12.7	6
DURAFIX-A-06102	6.4	12.7	6
DURAFIX-A-06103	7.9	12.7	6
DURAFIX-A-06104	9.5	12.7	6
DURAFIX-A-06105	11.1	12.7	6
DURAFIX-A-06106	12.7	12.7	6
DURAFIX-A-06107	14.4	12.7	6
DURAFIX-A-06108	15.9	12.7	6
DURAFIX-A-06109	17.4	12.7	6
DURAFIX-A-06110	19	12.7	6
DURAFIX-A-06111	20.6	12.7	6
DURAFIX-A-06112	22.2	12.7	6
DURAFIX-A-06113	25.4	12.7	6



MATERIAL

Mild Steel. Also available in stainless steel on special order.

FINISH AVAILABLE

Plain, Electro-Galvanized, Hot-Dip Galvanised



APPLICATION

Collar Clamp are Saddle Clamps with BSP Bossed Collar. These Clamps are used for heavier pipes which require strong anchoring. These Clamps are ideal for outdoor or indoor applications in building both residential or commercial. For fixing fire fighting pipes, water and sanitary pipes.

CONSTRUCTION

Collar clamps are made by bending two heavy duty metal strips and has a pipe welded to the body for strong support. The two halves of the clamps are secured by hex bolts and nuts.

MATERIAL

Mild Steel. Also available in stainless steel on special order.

FINISH AVAILABLE

Plain, Electro-Galvanized, Zinc Flake

MAX TEMPERATURE

110°C

PRODUCT CODE	PIPE DIA (MM)	BOLT SIZE	WIDTH (MM)	CONNECTOR SIZE
DURAFIX-A-07001	110	1/4" X 1"	22	1" BSP
DURAFIX-A-07002	110	1/4" X 1"	22	1/2" BSP
DURAFIX-A-07003	160	1/4" X 1"	22	1" BSP
DURAFIX-A-07004	160	1/4" X 1"	22	1/2" BSP

BASEPLATE WITH SOCKET



PRODUCT CODE	PIPE DIA (MM)	WIDTH (MM)	CONNECTOR SIZE
DURAFIX-A-07101	120	35	1" BSP
DURAFIX-A-07102	110	35	1/2" BSP

DOUBLE PIPE CLAMP

DURAFIX-A08



APPLICATION

Double pipe clamps, is designed in a unique way to help fix two pipes together, using one clamp. Double Pipe clamp is used for fixing plastic, copper or steel piping and wirings. Double Pipe clamp can be used in Fixing electrical wiring, Pipe fixing, Fixing central heating piping, HVAC, MEP industries etc.

CONSTRUCTION

Double Pipe clamps consists of a steel body shaped to wrap around two pipes. The clamp has EPDM Rubber attached to either sides of it body. The pipe is secured using the screws on the side. The unique design helps in fixing two pipes together, using one clamp. This model has M6 nut for mounting.

MATERIAL

Mild Steel. Also other materials can be provided on request

FINISH AVAILABLE

Plain, Electro-Galvanized, Zinc Flake

MAX TEMPERATURE

110° C

PRODUCT CODE	PIPE OD (IN)	RANGE (MM)	HANGER ROD SIZE (MM) (A)	SIDE SCREW SIZE	MAX LOAD (KG)	WIDTH (MM)
DURAFIX-A-08001	3/8"	16-19	M8	M6	30	19-20
DURAFIX-A-08002	1/2"	20-24	M8	M6	50	19-20
DURAFIX-A-08003	3/4"	25-30	M8	M6	50	19-20
DURAFIX-A-08004	1"	31-36	M8	M6	100	19-20



APPLICATION

Split Band Clamps are used where higher loads are to be sustained. These clamps are capable of both horizontal and vertical support of pipes. Clamps are made from thick, high strength steel. They are secured by sturdy bolts and nuts for better gripping force.

CONSTRUCTION

Split Band Clamps has a steel body and the two sides of the body is fixed and fastened using two bolts.

MATERIAL

Mild Steel. Also available in stainless steel on special order.

FINISH AVAILABLE

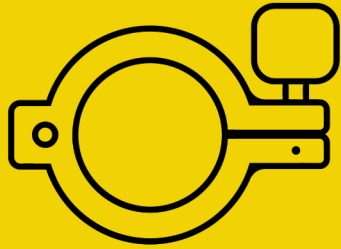
Plain, Electro-Galvanized, Zinc Flake

MAX TEMPERATURE

110°C

PRODUCT CODE	DIAMETER (MM)	NOMINAL PIPE SIZE (IN)	(MM)	BOLT (MM)	LENGTH (B) (MM)	WIDTH X THICKNESS (MM)	K (MM)	K1 (MM)
DURAFIX-D-09001	21	1/2"	DN15	M6 X 25	80	25 X 3	50	13
DURAFIX-D-09002	27	3/4"	DN20	M6 X 25	91	25 X 3	56	13
DURAFIX-D-09003	34	1"	DN25	M6 X 25	94	25 X 3	63	13
DURAFIX-D-09004	42	1 1/4"	DN32	M10 X 30	118	30 X 3	89	16
DURAFIX-D-09005	48	1 1/2"	DN40	M10 X 30	127	30 X 3	95	16
DURAFIX-D-09006	60	2"	DN50	M10 X 30	146	30 X 3	107	16
DURAFIX-D-09007	76	2 1/2"	DN65	M10 X 30	156	40 X 3	123	20
DURAFIX-D-09008	89	3"	DN80	M10 X 30	177	40 X 3	136	20
DURAFIX-D-09009	114	4"	DN100	M12 X 40	216	40 X 3	164	20
DURAFIX-D-09010	140	5"	DN125	M12 X 40	247	40 X 5	198	20
DURAFIX-D-09011	168	6"	DN150	M12 X 40	266	40 X 5	226	20
DURAFIX-D-09012	194	7"	DN175	M16 X 50	324	50 X 6	274	25
DURAFIX-D-09013	219	8"	DN200	M16 X 50	347	50 X 6	297	25
DURAFIX-D-09014	245	9"	DN225	M16 X 50	384	50 X 6	334	25
DURAFIX-D-09015	273	10"	DN250	M16 X 50	421	50 X 6	371	25
DURAFIX-D-09016	324	12"	DN300	M20 X 80	480	50 X 10	420	30

WWW.BYLDR.IN



Byldr[®]

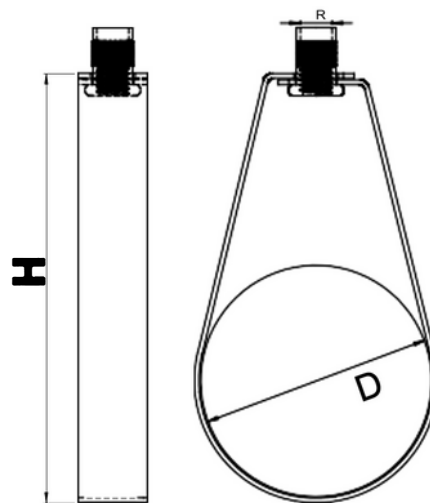
STRENGTH IN EVERY CONNECTION

DURAFIX - B



BYLDR PIPE HANGERS





APPLICATION

Sprinkler clamps are used for hanging pipelines of the sprinkler system of automatic fire extinguishing to the supporting foundations (ceilings of rooms). Clamps are used to simplify the installation of pipes and their further maintenance in fire extinguishing systems..

CONSTRUCTION

A SPRINKLER HANGER consists of a piece of mild steel shaped to support pipe. Gives Double thickness at the support.

MATERIAL

Mild Steel. Also other materials can be provided on request
*Available with Rubber lining on request.

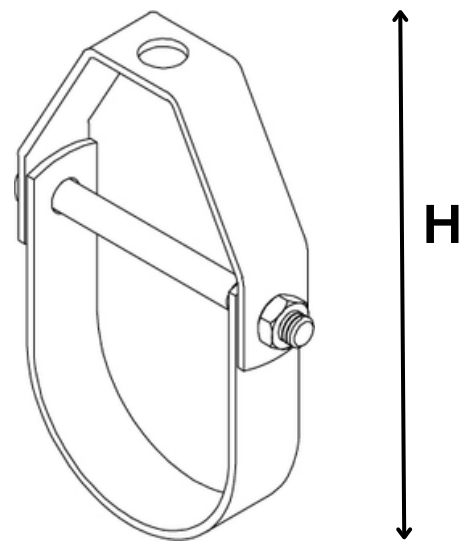
FINISH AVAILABLE

Plain, Electro-Galvanized, Zinc Flake, Hot Dip Galvanised, Epoxy Coating

PRODUCT CODE	NOMINAL PIPE SIZE (IN)	PIPE OD (MM)	PIPE OD (MM) D	HEIGHT H	HANGER ROD SIZE (MM) R	MAX LOAD (KG)
DURAFIX-B-01001	3/4"	DN20	26.7	61	M10	220
DURAFIX-B-01002	1"	DN25	33.4	70	M10	220
DURAFIX-B-01003	1 1/4"	DN32	42.1	78	M10	220
DURAFIX-B-01004	1 1/2"	DN40	48.2	84	M10	220
DURAFIX-B-01005	2"	DN50	60.3	102	M10	220
DURAFIX-B-01006	2 1/2"	DN65	73	118	M10	300
DURAFIX-B-01007	3"	DN80	88.9	144	M10	300
DURAFIX-B-01008	4"	DN100	114.3	176	M10	300
DURAFIX-B-01009	6"	DN150	168.3	262	M12	550
DURAFIX-B-01010	8"	DN200	219.1	305	M12	1300

CLEVIS HANGER

DURAFIX-B02



APPLICATION

Clevis Hangers are used for suspension of pipes. They are especially used to install drainage pipes or sloped runs. It allows pipes to move naturally. It also allows for vertical adjustments.

CONSTRUCTION

Generally, clevis hangers include a yoke that connects to your support overhead. They also use a metallic loop to cradle your pipe. This cradle leaves room for vertical adjustment and harnesses your pipes securely in the air.

MATERIAL

Mild Steel. Also other materials can be provided on request

FINISH AVAILABLE

Plain, Electro-Galvanized, Zinc Flake, Hot Dip Galvanised, Epoxy Coating

MAX TEMPERATURE

110°C

PRODUCT CODE	NOMINAL PIPE SIZE		PIPE OD (MM) D	MATERIAL DIMENSION (MM)		HANGER ROD SIZE (R)	CROSS BOLT DIA.	MAX LOAD (KG)
	(IN)	(MM)		HIEGHT	TOP HOLE DIA.			
DURAFIX-B-02001	1/2"	DN15	21.3	68	11	M10	M8	350
DURAFIX-B-02002	3/4"	DN20	26.7	72	11	M10	M8	350
DURAFIX-B-02003	1"	DN25	33.4	76	11	M10	M8	350
DURAFIX-B-02004	1 1/4"	DN32	42.1	87	11	M10	M8	350
DURAFIX-B-02005	1 1/2"	DN40	48.2	97	11	M10	M8	350
DURAFIX-B-02006	2"	DN50	60.3	114	11	M10	M8	350
DURAFIX-B-02007	2 1/2"	DN65	73	142	13	M12	M10	780
DURAFIX-B-02008	3"	DN80	88.9	165	13	M12	M10	780
DURAFIX-B-02009	4"	DN100	114.3	202	13	M12	M10	780
DURAFIX-B-02010	5"	DN125	141.3	236	13	M12	M12	1250
DURAFIX-B-02011	6"	DN150	168.3	278	13	M12	M12	1250
DURAFIX-B-02012	8"	DN200	219.1	338	13	M12	M12	2100
DURAFIX-B-02013	10"	DN250	273.1	419	17	M16	M16	2100
DURAFIX-B-02014	12"	DN300	323.8	490	21	M20	M20	2100
DURAFIX-B-02015	14"	DN350	355.6	556	21	M20	M20	3800
DURAFIX-B-02016	16"	DN400	406.4	610	25	M24	M20	3800
DURAFIX-B-02017	18"	DN450	457.2	675	25	M24	M24	4000
DURAFIX-B-02018	20"	DN500	508	715	32	M30	M24	4000
DURAFIX-B-02019	24"	DN600	609.6	850	32	M30	M24	9400
DURAFIX-B-02020	30"	DN750	762	995	32	M30	M24	9400

U BOLTS



APPLICATION

U- Bolts provide support to pipe when fixed with a structural member. The structural member can be above or below the pipe. U-Bolts restricts the lateral movement of the pipe while allowing the axial movement.

CONSTRUCTION

U-Bolts are made from Steel Wire Rods. The threads are rolled to specified sizes. The steel is electro-galvanised for corrosion resistance.

MATERIAL

Steel. Also available in Stainless Steel on special order.

FINISH AVAILABLE

Plain, Electro-Galvanized, Zinc Flake

MAX TEMPERATURE

250°C

PRODUCT CODE	NOMINAL PIPE SIZE (IN)	PIPE OD (MM)	PIPE OD (MM)	THREAD SIZE	ROD DIA (MM)	MAX LOAD (KG)
DURAFIX-B-03001	1/2"	DN15	21.3	M10	8.8	550
DURAFIX-B-03002	3/4"	DN20	26.7	M10	8.8	550
DURAFIX-B-03003	1"	DN25	33.4	M10	8.8	550
DURAFIX-B-03004	1 1/4"	DN32	42.1	M10	8.8	550
DURAFIX-B-03005	1 1/2"	DN40	48.2	M10	8.8	550
DURAFIX-B-03006			54	M10	8.8	550
DURAFIX-B-03007	2"	DN50	60.3	M10	8.8	550
DURAFIX-B-03008			63	M10	8.8	550
DURAFIX-B-03009			70	M10	8.8	550
DURAFIX-B-03010	2 1/2"	DN65	73	M12	10.7	900
DURAFIX-B-03011			80	M12	10.7	900
DURAFIX-B-03012			83	M12	10.7	900
DURAFIX-B-03013			86	M12	10.7	900
DURAFIX-B-03014	3"	DN80	88.9	M12	10.7	900
DURAFIX-B-03015	3 1/2"	DN90	101.6	M12	10.7	900
DURAFIX-B-03016			110	M12	10.7	900
DURAFIX-B-03017	4"	DN100	114.3	M12	10.7	900
DURAFIX-B-03018			125	M12	10.7	900
DURAFIX-B-03019			133	M12	10.7	900
DURAFIX-B-03020	5"	DN125	141.3	M12	10.7	900
DURAFIX-B-03021			150	M12	10.7	900
DURAFIX-B-03022			160	M12	10.7	900
DURAFIX-B-03023	6"	DN150	168.3	M12	10.7	900
DURAFIX-B-03024			200	M12	10.7	900
DURAFIX-B-03025	8"	DN200	219.1	M16	14.2	1900
DURAFIX-B-03026	10"	DN250	273	M20	18	3200
DURAFIX-B-03027	12"	DN300	323.8	M20	18	3200
DURAFIX-B-03028	14"	DN350	355.6	M20	18	3200
DURAFIX-B-03029	16"	DN400	406.4	M20	18	3200
DURAFIX-B-03030	18"	DN450	457.2	M20	18	3200
DURAFIX-B-03031	20"	DN500	508	M20	18	3200
DURAFIX-B-03032	24"	DN600	609.6	M20	18	3200

RISER CLAMP

DURAFIX-B04



APPLICATION

A riser clamp is a type of hardware used for pipe support in vertical runs of piping (risers) at each floor level. The devices are placed around the pipe, and integral fasteners are then tightened to clamp them onto the pipe.

The friction between the pipe and riser clamp transfers the weight of the pipe through the riser clamp to the building structure. Risers are generally located at floor penetrations, particularly for continuous floor slabs such as concrete.

MATERIAL

Mild Steel. Also other materials can be provided on request

FINISH AVAILABLE

Plain, Electro-Galvanized, Zinc Flake, Hot Dip Galvanised, Epoxy Coating

MAX TEMPERATURE

110°C

PRODUCT CODE	NOMINAL PIPE SIZE (IN)	PIPE OD (MM)	PIPE OD (MM) D	LENGTH BETWEEN HOLE CENTRE (MM) B	BOLT SIZE	MAX LOAD (KG)
DURAFIX-B-04001	1/2"	DN15	21.3	57	M10	1250
DURAFIX-B-04002	3/4"	DN20	26.7	68	M10	1250
DURAFIX-B-04003	1	DN25	33.4	76	M10	1250
DURAFIX-B-04004	1 1/4"	DN32	42.1	90	M10	1250
DURAFIX-B-04005	1 1/2"	DN40	48.2	110	M10	1250
DURAFIX-B-04006	2"	DN50	60.3	130	M10	1850
DURAFIX-B-04007	2 1/2"	DN65	73	142	M12	1850
DURAFIX-B-04008	3"	DN80	88.9	161	M12	2250
DURAFIX-B-04009	4"	DN100	114.3	190	M12	3600
DURAFIX-B-04010	6"	DN150	168.3	258	M16	4500
DURAFIX-B-04011	8"	DN200	219.1	333	M16	4500
DURAFIX-B-04012	10"	DN250	273	409	M16	5800
DURAFIX-B-04013	12"	DN300	323.8	467	M20	7300
DURAFIX-B-04014	16"	DN400	406.4	583	M20	7300
DURAFIX-B-04015	20"	DN500	508	708	M20	13400
DURAFIX-B-04016	24"	DN600	609.6	833	M20	13400



APPLICATION

Nail Clamp are used for a quick fix for fixing water or drain pipes. The nail side of this clamp can be easily hammered directly into the wall. The other half can be fixed by using two M6 screws. These screws will securely hold the pipe and restrict its movement.

These clamps are easy to use and can be mounted directly on wooden walls or brick mason walls.

MATERIAL

Steel. Also available in Stainless Steel on special order.

FINISH AVAILABLE

Plain, Electro-Galvanized, Zinc Flake

MAX TEMPERATURE

250°C

PRODUCT CODE	NOMINAL PIPE SIZE (IN)	(MM)	RANGE (MM)	THICKNESS (MM)	BREAK LOAD (KG)	SAFE LOAD (KG)
DURAFIX-B-05001	3/8"	DN15	15- 19	2	600	200
DURAFIX-B-05002	1/2"	DN22	20-25	2	600	200
DURAFIX-B-05003	3/4"	DN28	26-30	2	600	200
DURAFIX-B-05004	1"	DN35	32-36	2	600	200
DURAFIX-B-05005	1 1/4"	DN42	38-43	2	600	200
DURAFIX-B-05006	1 1/2"	DN48	47-51	2	600	200
DURAFIX-B-05007		DN54	53-58	2	600	200
DURAFIX-B-05008	2"	DN60	60-64	2	600	200
DURAFIX-B-05009		DN63	63-66	2	600	200
DURAFIX-B-05010		DN70	68-72	2	600	200
DURAFIX-B-05011	2 1/2"	DN75	74-80	2	600	200
DURAFIX-B-05012		DN83	81 -86	2	600	200
DURAFIX-B-05013	3"	DN90	87-92	2	600	200
DURAFIX-B-05014	3 1/2"	DN100	99 - 105	2	600	200
DURAFIX-B-05015		DN110	107- 112	2	600	200
DURAFIX-B-05016	4"	DN115	113-118	2	600	200
DURAFIX-B-05017		DN125	125- 130	2	600	200

MANIFOLD CLIPS

DURAFIX-B06



APPLICATION

Manifold Clips is recommended for support of pipe lines running at a definite distance from the wall or floor of a building or structure. It is used where removing and installing of pipe is done periodically.

CONSTRUCTION

Manifold Clip is made by bending metal strips. There are two pieces of clips there in a set,

MATERIAL

Mild Steel. Also other materials can be provided on request

FINISH AVAILABLE

Plain, Electro-Galvanized, Zinc Flake, Hot Dip Galvanised, Epoxy Coating

MAX TEMPERATURE

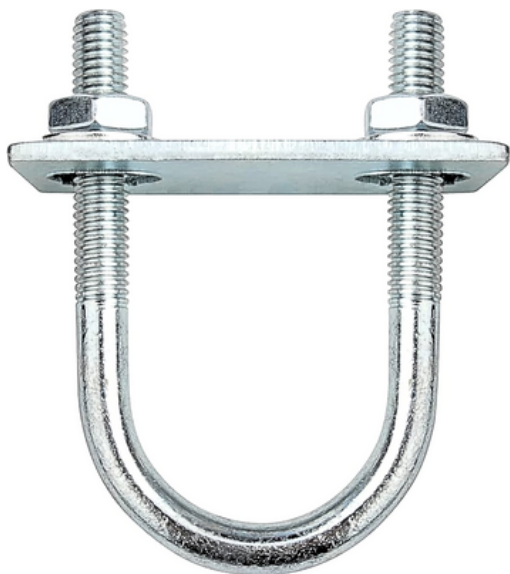
110°C

PRODUCT CODE	NOMINAL PIPE SIZE		PIPE OD (MM)	DIMENSIONS (MM)		
	(IN)	(MM)		LENGTH	WIDTH	HEIGHT
DURAFIX-B-06001	2"	DN50	60.3	214	186	83
DURAFIX-B-06002	2.5"	DN65	73	269	231	113
DURAFIX-B-06003	3"	DN80	88.9	284	246	113
DURAFIX-B-06004			110	298	259	113
DURAFIX-B-06005	4"	DN 100	114.3	311	271	113
DURAFIX-B-06006	5"	DN125	141.3	386	336	138
DURAFIX-B-06007	6"	DN 150	168.3	411	361	138
DURAFIX-B-06008	8"	DN200	219.1	469	419	138



U BOLT - WALL BRACKET

DURAFIX-B07



APPLICATION

Offset Bracket for U Bolt, these brackets provide an offset for mounting the U bolts. This creates a gap between the wall and the U bolt, so say to create an isolation gap. Also thes gap allows servicing of the mounted pipes.

SIZES AVAILABLE

3" to 10" U-Bolts

MATERIAL

Steel. Also available in Stainless Steel on special order.

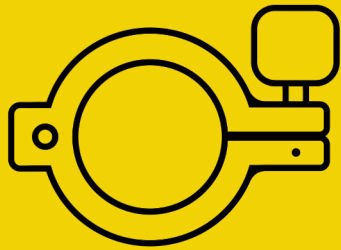
FINISH AVAILABLE

Plain, Electro-Galvanized, Zinc Flake

MAX TEMPERATURE

250°C

WWW.BYLDR.IN



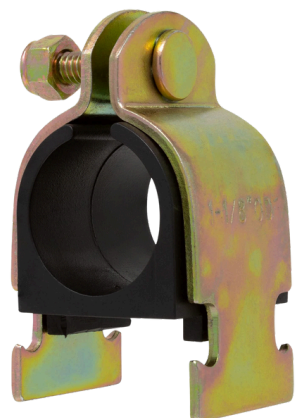
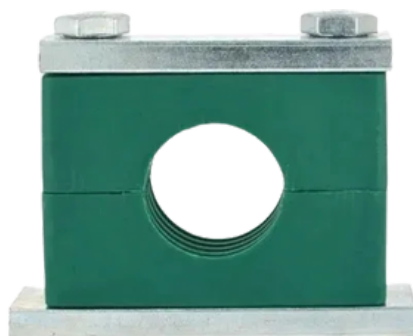
Byldr[®]

STRENGTH IN EVERY CONNECTION



DURAFIX - C

BYLDR PIPE SUPPORTS



STRUT CLAMP

DURAFIX-C01



APPLICATION

Strut Clamps are widely used to fix pipes on the strut channels so that easy installation and removal of pipes can be done. These clamps allow for modular design changes over time. These are made from Carbon steel which provide adequate strength for holding the pipes. The Standard Water, Drainage and Sanitary pipes can be easily mounted with these clamps

As a standard 32mm wide strips are used so that they can be used on 41mm wide Strut channels.

The Strip is 32mm Wide.

MATERIAL

Mild Steel. Also other materials can be provided on request

FINISH AVAILABLE

Plain, Electro-Galvanized, Zinc Flake, HDG

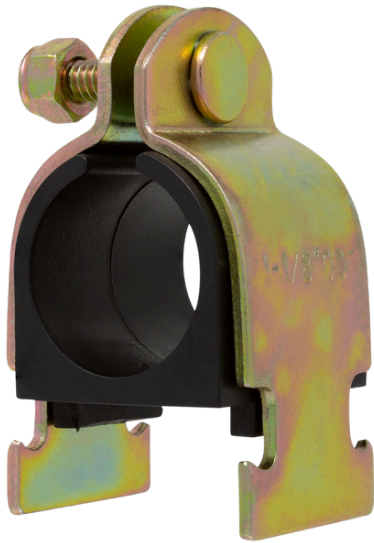
MAX TEMPERATURE

190°C

PRODUCT CODE	NOMINAL PIPE SIZE		PIPE OD (MM)	BOLT SIZE
	(IN)	(MM)		
DURAFIX-C-01001	1/2"	DN15	22	M6 X 25
DURAFIX-C-01002	3/4"	DN20	27	M6 X 25
DURAFIX-C-01003	1	DN25	34	M6 X 25
DURAFIX-C-01004	1.25	DN32	42	M6 X 25
DURAFIX-C-01005	1.5	DN40	48	M6 X 25
DURAFIX-C-01006	2"	DN50	60	M8 X 40
DURAFIX-C-01007	2 1/2"	DN65	73	M8 X 40
DURAFIX-C-01008	3"	DN80	89	M8 X 40
DURAFIX-C-01009	4"	DN100	114	M8 X 40

CUSHION CLAMP

DURAFIX-C02



APPLICATION

Cushion Clamps or Strut Cushion Clamps are typically used in pneumatic refrigeration, HVAC, and some low pressure hydraulic lines. cushion clamps also eliminate metal to metal contact between the fluid lines and the support hardware.

Ideal for multiple runs while absorbing shock and vibration, reducing unwanted noise, and preventing galvanic corrosion. Interlock edges and channel locator legs to help ensure that the cushion remains in place.

CONSTRUCTION

Cushion Clamps unique design enables fast and simple installation - one person/one tool required. Its modular design allows adding or changing piping without disturbing adjacent Tube. The tube sizes can be mixed to suit installation requirements.

MATERIAL

Mild Steel. Also available in stainless steel on special order.

FINISH AVAILABLE

Yellow di-chromate/yellow zinc. Tri-Valent (non-hex) plated.

MAX TEMPERATURE

130° C

PRODUCT CODE	NOMINAL PIPE SIZE		PIPE OD (MM)
	(IN)	(MM)	
DURAFIX-C-02001	1/4"	-	0.25
DURAFIX-C-02002	3/8"	-	0.37
DURAFIX-C-02003	1/2"	-	0.5
DURAFIX-C-02004	-	1/4"	0.54
DURAFIX-C-02005	5/8"	-	0.62
DURAFIX-C-02006	-	3/8"	0.67
DURAFIX-C-02007	3/4"	-	0.75
DURAFIX-C-02008	-	1/2"	0.84
DURAFIX-C-02009	7/8"	-	0.87
DURAFIX-C-02010	1"	-	1
DURAFIX-C-02011	-	3/4"	1.05
DURAFIX-C-02012	1-1/8"	-	1.12
DURAFIX-C-02013	1-1/4"	-	1.25
DURAFIX-C-02014	-	1"	1.31
DURAFIX-C-02015	1-3/8"	-	1.37
DURAFIX-C-02016	1-1/2"	-	1.5
DURAFIX-C-02017	1-5/8"	-	1.62
DURAFIX-C-02018	-	1-1/4"	1.66
DURAFIX-C-02019	1-3/4"	-	1.75
DURAFIX-C-02020	1-7/8"	1-1/2"	1.9
DURAFIX-C-02021	2"	-	2
DURAFIX-C-02022	2-1/8"	-	2.12
DURAFIX-C-02023	2-1/4"	-	2.25
DURAFIX-C-02024	2-3/8"	2"	2.37
DURAFIX-C-02025	2-1/2"	-	2.5
DURAFIX-C-02026	2-5/8"	-	2.62
DURAFIX-C-02027	2-7/8"	2-1/2"	2.87
DURAFIX-C-02028	3"	-	3
DURAFIX-C-02029	3-1/8"	-	3.12
DURAFIX-C-02030	3-1/2"	3"	3.5



APPLICATION

Standard U strap clamps are used to install pipes vertically or horizontally. It Provides a quick installation as mounting is done by 2 screws.

CONSTRUCTION

The U Strap Clamp is made up of steel body. The steel is electro-galvanised for corrosion resistance.

MATERIAL

Mild Steel. Also other materials can be provided on request

FINISH AVAILABLE

Plain, Electro-Galvanized, Zinc Flake

MAX TEMPERATURE

110-250°C

PRODUCT CODE	NOMINAL PIPE SIZE		PIPE OD	THICKNESS	WIDTH	MAX LOAD
	(IN)	(MM)	(MM)	(MM)	(MM)	(KG)
DURAFIX-C-03001	1/2"	DN15	21.3	1.6	19	500
DURAFIX-C-03002	3/4"	DN20	26.7	1.6	19	500
DURAFIX-C-03003	1"	DN25	33.4	1.6	19	500
DURAFIX-C-03004	1 1/4"	DN32	42.1	1.6	19	500
DURAFIX-C-03005	1 1/2"	DN40	48.2	2	19	600
DURAFIX-C-03006	2"	DN50	60.3	2	19	600
DURAFIX-C-03007	2 1/2"	DN65	73	2	19	600
DURAFIX-C-03008	3"	DN80	88.9	2	25	800
DURAFIX-C-03009	3 1/2"	DN90	101.6	2	25	800
DURAFIX-C-03010	4"	DN100	114.3	3	25	900
DURAFIX-C-03011	5"	DN125	141.3	3	25	900
DURAFIX-C-03012	6"	DN150	168.3	3	30	1200
DURAFIX-C-03013	8"	DN200	219.1	3	30	1200

*Available with Rubber Lining on request

SADDLE CLAMP

DURAFIX-C04



APPLICATION

Standard Saddle Clamps are used to install pipes vertically or horizontally. It Provides a quick installation as mounting is done by 2 screws. It is suited for Light weight pipes.

CONSTRUCTION

The Saddle Clamp is made up of steel body. The steel is electro-galvanised for corrosion resistance.

MATERIAL

Mild Steel. Also available in stainless steel on special order.

FINISH AVAILABLE

Plain, Electro-Galvanized, Zinc Flake

MAX TEMPERATURE

250° C

PRODUCT CODE	NOMINAL PIPE SIZE (IN)	PIPE OD (MM)	THICKNESS (MM)	WIDTH (MM)	MAX LOAD (KG)	
DURAFIX-C-04001	1/2"	DN15	21.3	1	16	350
DURAFIX-C-04002	3/4"	DN20	26.7	1	16	350
DURAFIX-C-04003	1"	DN25	33.4	1	16	350
DURAFIX-C-04004	1 1/4"	DN32	42.1	1.2	16	450
DURAFIX-C-04005	1 1/2"	DN40	48.2	1.2	16	450
DURAFIX-C-04006	2"	DN50	60.3	1.2	16	450
DURAFIX-C-04007	2 1/2"	DN65	73	1.4	16	550
DURAFIX-C-04008	3"	DN80	88.9	1.4	16	550
DURAFIX-C-04009	3 1/2"	DN90	101.6	1.4	16	550
DURAFIX-C-04010	4"	DN100	114.3	1.4	16	550
DURAFIX-C-04011	5"	DN125	141.3	1.4	16	550
DURAFIX-C-04012	6"	DN150	168.3	1.4	16	550

HALF SADDLE

DURAFIX-C05



APPLICATION

The Half saddle clamp is ideal for supporting standard conduit, cables, and steel pipes on walls or the sides of beams. However, its not recommended for horizontal use on ceilings, the bottoms of beams, or similar applications, as the safety factor is significantly decreased in these positions.

It provides a quick installation as mounting is done by 1 screws. It is suited for Lighter weight and loads. Its used to handle more load, can be provided on special order requirements.

CONSTRUCTION

The Half Saddle Clamp is made up of steel body. The steel is electro- galvanised for corrosion resistance. The unique design of this clamp enable it to be fixed quickly and with ease.

MATERIAL

Mild Steel. Also other materials can be provided on request

FINISH AVAILABLE

Plain, Electro-Galvanized, Zinc Flake, HDG, Epoxy, Vinyl Coating

PRODUCT CODE	PIPE DIA (MM)	WIDTH (MM)	HOLE SIZE (MM)
DURAFIX-A-05001	4.7	12.7	6
DURAFIX-A-05002	6.4	12.7	6
DURAFIX-A-05003	7.9	12.7	6
DURAFIX-A-05004	9.5	15.9	6
DURAFIX-A-05005	11.1	15.9	6
DURAFIX-A-05006	12.7	15.9	6
DURAFIX-A-05007	14.3	15.9	6
DURAFIX-A-05008	15.9	15.9	6
DURAFIX-A-05009	17.4	15.9	6
DURAFIX-A-05010	19.1	15.9	6
DURAFIX-A-05011	20.6	15.9	6
DURAFIX-A-05012	22.2	19.1	8
DURAFIX-A-05013	23.8	19.1	8
DURAFIX-A-05014	25.4	19.1	8

GANG CLAMP WITH BACK PLATE

DURAFIX-C06



APPLICATION

Gang Clamps are used to fix multiple tubes running axially parallel to each other. They restrict the lateral movement while allowing the axial movement.

CONSTRUCTION

It is made from SS316, for marine and near sea applications. It is also available in other material on request.

MATERIAL

SS316. Also available in other materials on request.

FINISH AVAILABLE

Sand Polished

MAX TEMPERATURE

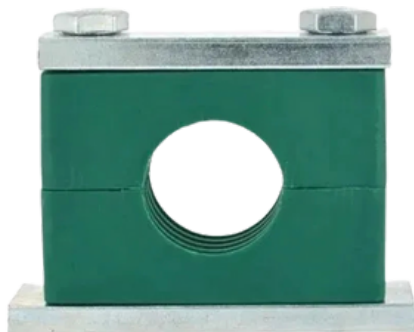
700° C

PRODUCT CODE	TUBE SIZE (IN)	NO OF TUBES (MM)	THICKNESS (MM)	STRIP WIDTH (MM)
DURAFIX-C-06002	0.25	2	1.6	16
DURAFIX-C-06003	0.25	3	1.6	16
DURAFIX-C-06004	0.25	4	1.6	16
DURAFIX-C-06005	0.25	5	1.6	16
DURAFIX-C-06006	0.25	6	1.6	16
DURAFIX-C-06007	0.25	7	1.6	16
DURAFIX-C-06008	0.25	8	1.6	16
DURAFIX-C-06009	0.25	9	1.6	16
DURAFIX-C-06010	0.25	10	1.6	16
DURAFIX-C-06011	0.25	11	1.6	16
DURAFIX-C-06012	0.25	12	1.6	16

PRODUCT CODE	TUBE SIZE (IN)	NO OF TUBES (MM)	THICKNESS (MM)	STRIP WIDTH (MM)
DURAFIX-C-06102	0.375	2	1.6	16
DURAFIX-C-06103	0.375	3	1.6	16
DURAFIX-C-06104	0.375	4	1.6	16
DURAFIX-C-06105	0.375	5	1.6	16
DURAFIX-C-06106	0.375	6	1.6	16
DURAFIX-C-06107	0.375	7	1.6	16
DURAFIX-C-06108	0.375	8	1.6	16
DURAFIX-C-06109	0.375	9	1.6	16
DURAFIX-C-06110	0.375	10	1.6	16
DURAFIX-C-06111	0.375	11	1.6	16
DURAFIX-C-06112	0.375	12	1.6	16

PRODUCT CODE	TUBE SIZE (IN)	NO OF TUBES (MM)	THICKNESS (MM)	STRIP WIDTH (MM)
DURAFIX-C-06202	0.5	2	1.6	16
DURAFIX-C-06203	0.5	3	1.6	16
DURAFIX-C-06204	0.5	4	1.6	16
DURAFIX-C-06205	0.5	5	1.6	16
DURAFIX-C-06206	0.5	6	1.6	16
DURAFIX-C-06207	0.5	7	1.6	16
DURAFIX-C-06208	0.5	8	1.6	16
DURAFIX-C-06209	0.5	9	1.6	16
DURAFIX-C-06210	0.5	10	1.6	16
DURAFIX-C-06211	0.5	11	1.6	16
DURAFIX-C-06212	0.5	12	1.6	16

*Fastener Size 1/4" not included



APPLICATION

Tube clamps (standard) are used to fixate or attach one piece of pipe, hose or other components in hydraulic systems. Standard Tube clamps are normally used for general Purpose applications for fixing hydraulic pipes which are pressurized (or not pressurized).

CONSTRUCTION

Standard series Tube clamps consist of Top plates, Bottom weld plates, Hex bolts, Plastic or aluminium Jaws.

PP – Plastic Polypropylene –dark green colour approved as per DIN 3015 standard.

FINISH AVAILABLE

Plain, Electro-Galvanized, Zinc Flake

MATERIAL

WELD PLATE : SS304

WELD ON : SS304

BODY : POLYPROPYLENE

*Other materials like MILD STEEL can be provided on request

PRODUCT CODE	TUBE OD (IN)	NO OF TUBES (MM)
DURAFIX-C-07002	1/4"	1
DURAFIX-C-07003	3/8"	1
DURAFIX-C-07004	1/2"	1
DURAFIX-C-07005	3/4"	1
DURAFIX-C-07006	1"	1

DUPLEX CLAMP

DURAFIX-C08



APPLICATION

Duplex clamps are used to fix multiple tubes running axially parallel to each other. Duplex clamps restrict the movement for the wires or tubes enabling better fixing and support solution. Duplex clamps are single sided clamps and are best used against a wall or other mounting surface. Its unique design results in ease in fixing and make the process quicker.

CONSTRUCTION

Duplex clamp is made up of Stainless steel body. The Stainless Steel body is sand polished for finishing. The unique design of this clamp enable it to be provide more effective solution and durable support.

MATERIAL

SS316. Also available in other materials on request.

FINISH AVAILABLE

Sand Polish

MAX TEMPERATURE

700° C

PRODUCT CODE	TUBE OD (IN)	NO OF TUBES (MM)
DURAFIX-C-08001	1/4"	2
DURAFIX-C-08002	3/8"	2
DURAFIX-C-08003	1/2"	2
DURAFIX-C-08004	3/4"	2
DURAFIX-C-08005	1"	2



APPLICATION

Yoke Clamps are used to fix multiple tubes running axially parallel to each other. They restrict the lateral movement while allowing the axial movement.

Yoke clamp is widely used range of applications like for fixing small pipings and wiring running parallel to each other.

CONSTRUCTION

The Yoke Clamps is made up of Stainless steel body. The Stainless Steel body is sand polished for finishing. The unique design of this clamp enable it to be a quick and easy solution.

FINISH AVAILABLE

Sand Polish

MAX TEMPERATURE

700°C

MATERIAL

SS316. Also available in other materials on request.

PRODUCT CODE	TUBE OD (IN)	NO OF TUBES (MM)
DURAFIX-C-09001	1/4"	2
DURAFIX-C-09002	3/8"	2
DURAFIX-C-09003	1/2"	2
DURAFIX-C-09004	3/4"	2
DURAFIX-C-09005	1"	2
PRODUCT CODE	TUBE OD (IN)	NO OF TUBES (MM)
DURAFIX-C-09101	1/4"	3
DURAFIX-C-09102	3/8"	3
DURAFIX-C-09103	1/2"	3
DURAFIX-C-09104	3/4"	3
DURAFIX-C-09105	1"	3
PRODUCT CODE	TUBE OD (IN)	NO OF TUBES (MM)
DURAFIX-C-09201	1/4"	4
DURAFIX-C-09202	3/8"	4
DURAFIX-C-09203	1/2"	4
DURAFIX-C-09204	3/4"	4
DURAFIX-C-09205	1"	4

DRAINAGE PIPE CLIP

DURAFIX-C10



APPLICATION

Drainage Pipe Clamps are made from thick Medium Tensile Steel Sheets. Hence they can be used to fix drainage pipes which are heavy. The fixing can be done on one side only with 1 or 2 bolts.

CONSTRUCTION

Drainage Clamps are made up of steel body. The steel is electro-galvanised for corrosion resistance. These are made from 3mm thick x 30mm wide steel material.

MATERIAL

Mild Steel. Also available in stainless steel on special order.

FINISH AVAILABLE

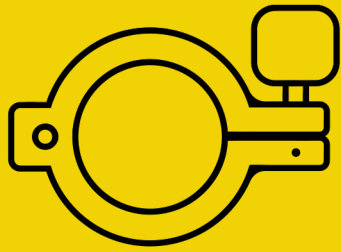
Trivalent Blue Zinc Electro Plating or Powder Coated

MAX TEMPERATURE

170° C

PRODUCT CODE	PIPE DIA (MM)	BAND SIZE (MM)	HOLE SIZE (MM)	PAIR OF HOLES (MM)
DURAFIX-A-10001	63	3MM X 32MM	9	1
DURAFIX-A-10002	90	3MM X 32MM	9	2
DURAFIX-A-10003	160	3MM X 32MM	9	2
DURAFIX-A-10004	200	3MM X 32MM	9	2
DURAFIX-A-10005	225	3MM X 32MM	9	2
DURAFIX-A-10006	280	3MM X 32MM	9	2

WWW.BYLDR.IN



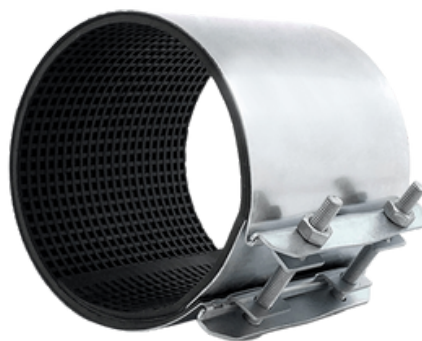
Byldr[®]

STRENGTH IN EVERY CONNECTION

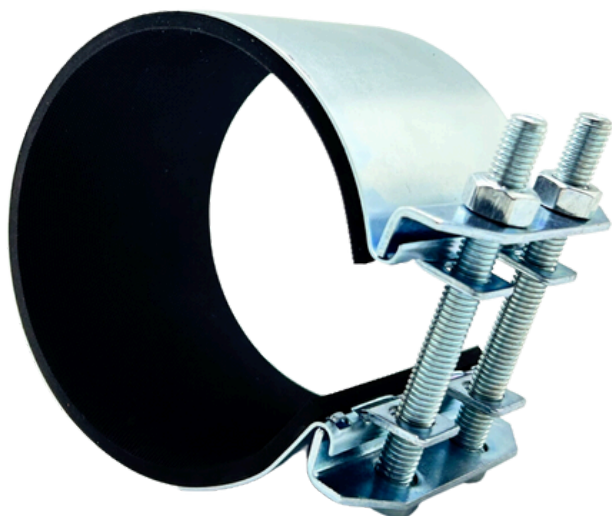
DURAFIX - D



LEAKAGE REPAIR



CHECK OUT VIDEO



APPLICATION

These easy to use Pipe Leakage Repair Clamps are designed to stop the leakage of minor pin holes, small crack due to rust or physical damage. Note the pipe around the crack must be strong enough to hold the tightening force of the clamp. (that is, it must not be badly rusted). It provides a partial seal hence the leakage must be smaller (ideally 1/3rd the size of the clamp)

CONSTRUCTION

The RC model Leakage Repair Clamp is made of a steel band which is lined with specially designed criss-cross patterned rubber. The tightening is done by 2 strong bolts.

MATERIAL

Mild Steel. Also available in stainless steel on special order.

FINISH AVAILABLE

Plain, Electro-Galvanized, Zinc Flake

MAX TEMPERATURE

100° C

PRODUCT CODE	LENGTH OF CLAMP (MM)	NOMINAL PIPE SIZE (IN)	(MM)	PIPE OD (MM)	RANGE (MM)	Bolt	WORKING PR Kg/cm ²
DURAFIX-D-01001	70	1/2"	DN15	21.3	20-25	M8 X 60	16
DURAFIX-D-01002	70	3/4"	DN20	26.7	26-30	M8 X 60	16
DURAFIX-D-01003	70	1"	DN25	33.4	32-36	M8 X 60	16
DURAFIX-D-01004	70	1 1/4"	DN32	42.1	41-44	M8 x 60	16
DURAFIX-D-01005	70	1 1/2"	DN40	48.2	46-53	M8 X 80	16
DURAFIX-D-01006	70	2"	DN50	60.3	59-67	M8 X 80	16
DURAFIX-D-01007	70	2 1/2"	DN65	73	74-82	M8 X 80	16
DURAFIX-D-01008	70	3"	DN80	88.9	87-92	M8 X 80	16
DURAFIX-D-01009	150	4"	DN100	101	101-107	M10 X 90	16
DURAFIX-D-01010	150	4 1/2"	DN110	108	108-118	M10 X 90	16
DURAFIX-D-01011	150	5	DN125	135	130-140	M10 x 90	16
DURAFIX-D-01012	150	6	DN150	158	155-165	M10 X 90	16

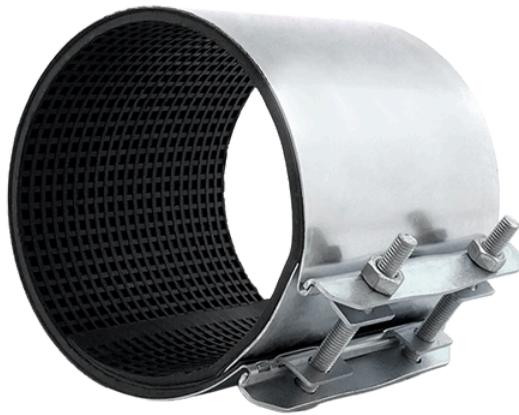
LEAKAGE REPAIR CLAMP

WC MODEL

DURAFIX-D02



CHECK OUT VIDEO



APPLICATION

These easy to use Pipe Leakage Repair Clamps are designed to stop the leakage of Minor or Major Holes, Longitudinal Cracks etc. Note the pipe around the crack must be strong enough to hold the tightening force of the clamp. (that is, it must not be badly rusted). It provides a complete seal hence cover the pipe completely.

CONSTRUCTION

The RC model Leakage Repair Clamp is made of a steel band which is lined with specially designed **WAFFLE** patterned rubber to arrest the leakage into a confined area. The tightening is done by 2 strong bolts.

MATERIAL

Mild Steel. Also other materials can be provided on request

FINISH AVAILABLE

Plain, Electro-Galvanized, Zinc Flake

MAX TEMPERATURE

100°C

PRODUCT CODE	LENGTH OF CLAMP (MM)	NOMINAL PIPE SIZE (IN)	(MM)	PIPE OD (MM)	RANGE (MM)	Bolt	WORKING PR Kg/cm^2
DURAFIX-D-02001	162	4"	DN100	101	101-110	M10 x 90	16
DURAFIX-D-02002	162	4 1/2"	DN110	110	110-118	M10 X 90	16
DURAFIX-D-02003	162	5"	DN125	130	130-139	M10 x 90	16
DURAFIX-D-02004	162	6"	DN150	159	159-168	M10 X 90	16
DURAFIX-D-02005	162	8"	DN200	217	217-226	M10 x 90	16
DURAFIX-D-02006	250	4"	DN100	101	101-110	M10 X 90	16
DURAFIX-D-02007	250	4 1/2"	DN110	110	110-118	M10 x 90	16
DURAFIX-D-02008	250	5"	DN125	130	130-139	M10 X 90	16
DURAFIX-D-02009	250	6"	DN150	159	159-168	M10 x 90	16
DURAFIX-D-02010	250	8"	DN200	217	217-226	M10 X 90	16

APPLICATION

Some examples of the actual usage of the Pipe Repair Clamps.



COMBINATION USE

Model **DURAFIX-D02** can be used in combination also to repair leakage in larger size pipes.

Combination configuration reduces the Working Pressure Rating of the clamp to 10 kg/cm².

Some combination examples are shown in table.



DN OF PIPE (MM)	COMBINATION OPTION
215-233	DN101-110 + DN101-110
222-240	DN101-110 + DN110-118
229-247	DN110-118 + DN110-118
244-262	DN101-110 + DN130-139
251-269	DN110-118 + DN130-139
273-291	DN101-110 + DN159-170
273-291	DN130-139 + DN130-139
280-298	DN110-118 + DN159-170
302-320	DN130-139 + DN159-170
331-349	DN101-110 + DN217-226
331-349	DN159-170 + DN159-170
338-356	DN110-118 + DN217-226
360-378	DN130-139 + DN217-226
389-407	DN159-170 + DN217-226
447-465	DN217-226 + DN217-226

LEAKAGE REPAIR COUPLING & CLAMP

DURAFIX-D03



APPLICATION

These easy to use Pipe Leakage Repair Clamps are designed to stop the leakage of Minor or Major Holes, Longitudinal Cracks etc. Note the pipe around the crack must be strong enough to hold the tightening force of the clamp. (that is, it must not be badly rusted). It provides a complete seal hence cover the pipe completely.

CONSTRUCTION

The RC model Leakage Repair Clamp is made of a steel band which is lined with specially designed **WAFFLE** patterned rubber to arrest the leakage into a confined area. The tightening is done by 2 strong bolts.

MATERIAL

Mild Steel. Also other materials can be provided on request

FINISH AVAILABLE

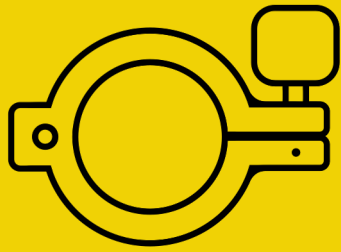
Plain, Electro-Galvanized, Zinc Flake

MAX TEMPERATURE

100°C

PRODUCT CODE	LENGTH OF CLAMP (MM)	NOMINAL PIPE SIZE (IN)	PIPE OD (MM)	RANGE (MM)	Bolt	WORKING PR Kg/cm^2	
DURAFIX-D-03001	88/162	2"	DN50	60.3	59-62	M8	16
DURAFIX-D-03002	88/162	2. 1/2"	DN60	76.1	75-78	M8	16
DURAFIX-D-03003	88/162	3"	DN75	88.9	88-92	M10	16
DURAFIX-D-03004	88/162	4"	DN100	114.3	112-116	M10	16
DURAFIX-D-03005	88/162	5"	DN125	140	137-143	M12	16
DURAFIX-D-03006	88/162	6"	DN150	168	166-170	M12	16
DURAFIX-D-03007	88/162	8"	DN200	219	217-221	M14	16
DURAFIX-D-03008	250	10"	DN250	273	271-275	M14	16
DURAFIX-D-03009	250	12"	DN300	325	323-327	M14	16
DURAFIX-D-03010	250	14"	DN350	355.6	354-358	M14	16

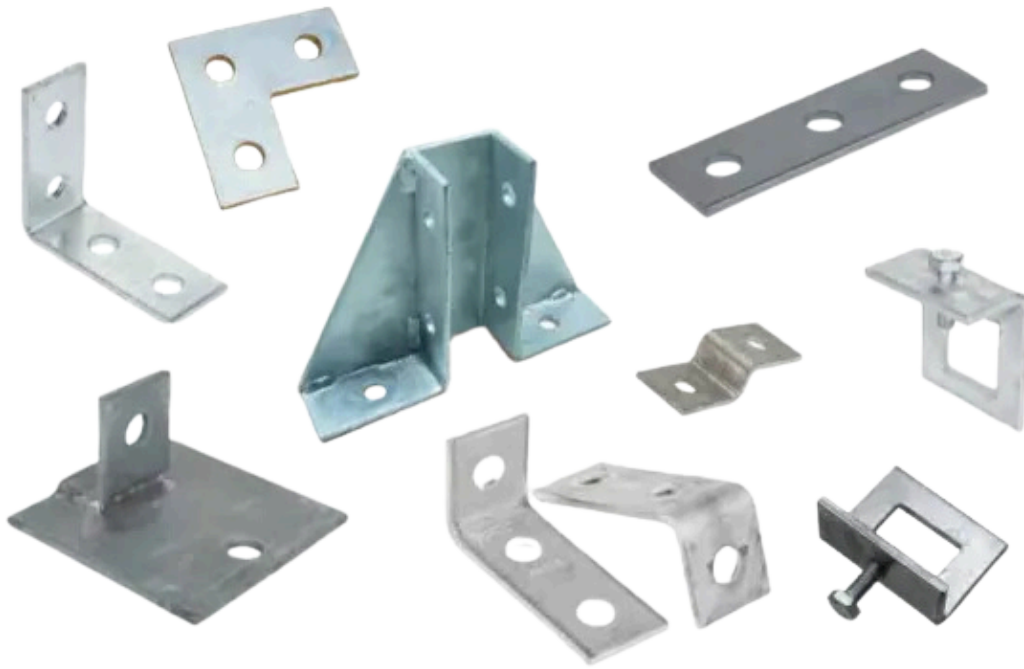
WWW.BYLDR.IN



Byldr[®]

STRENGTH IN EVERY CONNECTION

DURAFIX - E

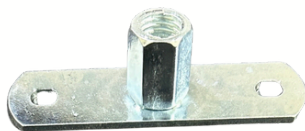


BYLDR BRACKETRY



MOUNT PLATES & BRACKETERY

MOUNT PLATES

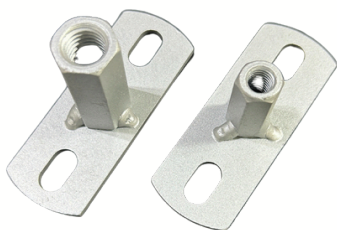


STANDARD MOUNT / CEILING PLATE

MATERIAL: Steel (BZP) / Stainless Steel

Nut: M8/M10

Load Capacity: 2 kN



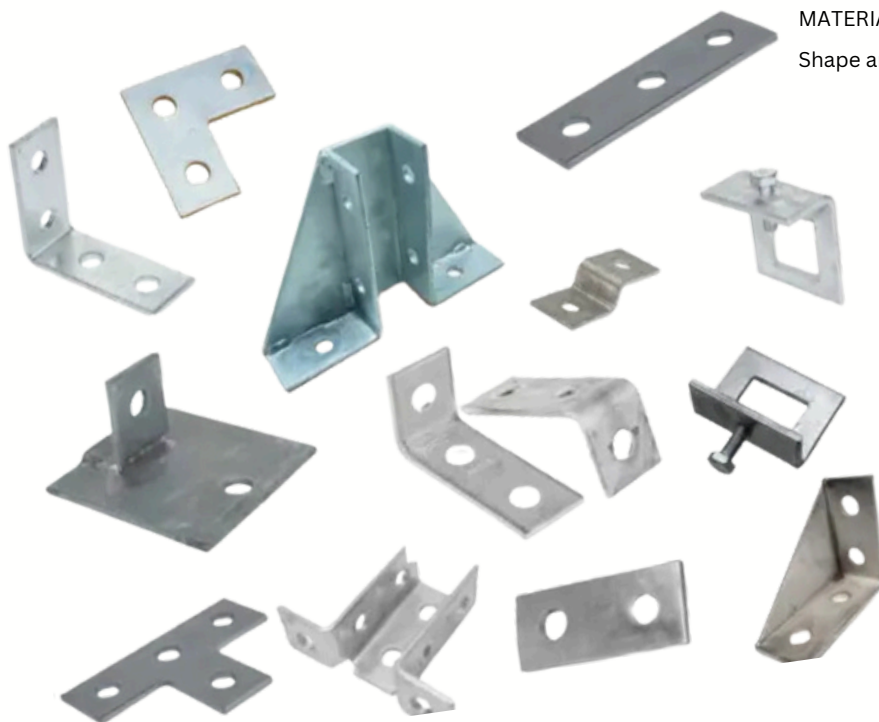
HEAVY DUTY MOUNT / CEILING PLATE

MATERIAL: Steel (BZP) / Stainless Steel

Nut: Long Nut M8 or M10 or M12

Load Capacity: 9 kN

BRACKETERY



MATERIAL: Steel (BZP) (HDG) (Zn-Al)/ Stainless Steel

Shape and Design as per application

On special Request we can cater to OEM and private labelling needs of brands. We can provide products as per you unique requirements

Kindly visit:

www.contractmanufacturing.com

Contact us at:

jagesh@ppimpexinida.com



AWARDS & RECOGNITIONS



Government Regd Export House

GOVERNMENT OF
INDIA RECOGNISED
EXPORT HOUSE



ISO 9001:2015 Certified

D&BNo. 860317537



Best Design Award 2021

For Gas Appliance Directive

